



**KROLY**<sup>®</sup>  
2022 *Collection*



**ROLY**<sup>®</sup>



# INDEX



**LIMITED**  
COLLECTION  
by **Roly**



**ECO**  
COLLECTION



**CASUAL SUMMER**  
COLLECTION

T-shirts.....	34
TankTops.....	58
Poloshirts.....	62
Swimsuits.....	72



**CASUAL WINTER**  
COLLECTION

T-shirts.....	76
Polo shirts.....	80
Inwhite.....	84
Jackets and Sweatshirts.....	86
Waistcoats.....	110
Fleeces.....	116
Coats.....	124
Raincoats.....	142



**SPORTS**  
COLLECTION

Technical T-shirts and Polo shirts.....148  
 Pants & Leggins.....176  
 Team Collection.....200  
 Tracksuits.....208  
 Winter Sports.....214



**KIDS**  
COLLECTION



**HEADWEAR & ACCESSORIES**  
COLLECTION

Caps.....280  
 Accessories.....284  
 Backpacks.....286



**FOOTWEAR**  
COLLECTION



# NEW IN 2022



CANARY\_7121



COLUMBA\_7120



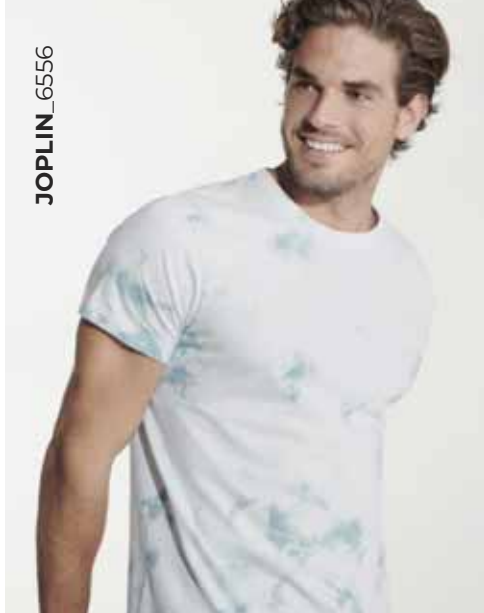
FALCO\_7115



BRYANT\_8325



JOPLIN\_6556



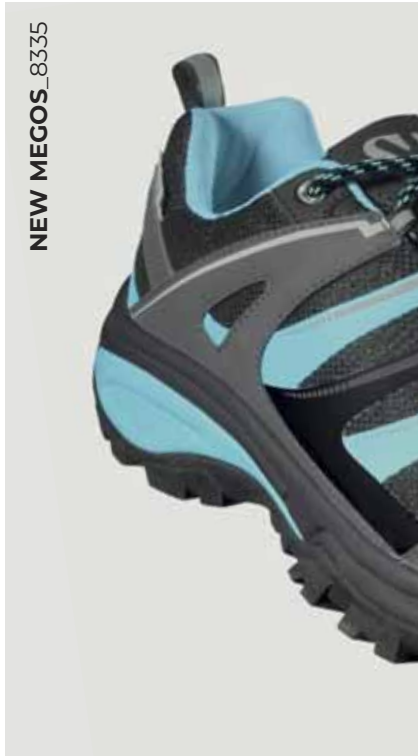
KEMI\_1118



LEVI\_1180

DERBY\_0441

NEW MEGOS\_8335



MANASLU\_1119



IRIA\_1181

WOODS\_8330





NEW

**WORKWEAR**

CATALOGUE







FIRE RETARDANT



HORECA



BASICS



HIGH VISIBILITY



INDUSTRY



SANITARY & ESTHETICS



# A WORKING WORLD WITHOUT LIMITS!

Discover our new **Roly Workwear** catalogue, where we present you our new collections with a wide range of products for the working environment.

**HIGH VISIBILITY | INDUSTRY | SANITARY & ESTHETICS | FOOD INDUSTRY | HORECA | BASICS | ACCESSORIES**

**More than 30** new models to improve your company's uniforms.



We strongly believe that fashion and the environment do not have to be mutually exclusive.

Garments created and produced with ecological, organic and recycled fabrics with the sole objective of promoting the sustainability and protection of our environment.



We know that not all good athletes wear Roly, but we are sure that those who wear Roly are good athletes. And as this is something we have very present, we invite you to discover our new identity Roly Sport, your exclusive selection of sportswear.

Each year we create different models in different fabrics, shapes and types so that you find the right one for the exercise and sport you want to practice.





In Roly, we take a step forward with our ROLY FOOTWEAR identity. With this new line, we expand our collection with the intention of offering a more complete service.

This is only the beginning of a path, which will keep growing, always attentive to our clients' needs.

Find out more about our collection, to round out your looks.





**limited**  
collection

by **ROLY**<sup>®</sup>

**new**  
2022





## 6556 JOPLIN



T-shirt de manga curta unisexo com efeito de tintura. Pescoço da tripulação com nervuras 1x1 com costuras cobertas no colarinho. O acabamento e a tonalidade desta peça de vestuário podem variar dentro da mesma tonalidade de cor.

### TECIDO

100% algodão escovado, camisola simples, 160 g/m<sup>2</sup>.

### TAMANHOS

S - M - L - XL - 2XL - 3XL

### PACK



1



50



126 266 268 262 264

# KE- MI

**new**  
2022

## 1118 KEMI



Sweat unissexo com capuz.  
Bolso estilo canguru.  
Cordões planos com ilhós bordada.  
Punhos e cintura no mesmo tecido do corpo da sweat. Detalhe com relevo nas mangas

### TECIDO

60% algodão / 40% poliéster, pelúcia não cardada, 280 g/m<sup>2</sup>.

### TAMANHOS

XS - S - M - L - XL - 2XL - 3XL

### PACK



1



20



132



160



126



266



262



268





**new**  
2022



### 0441 **DERBY**



Calção estilo casual.  
Cintura elástica ajustável mediante cordões exteriores. Dois bolsos laterais.

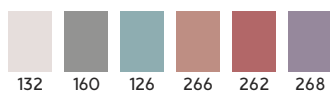
#### TECIDO

60% algodão / 40% poliéster, pelúcia não cardada, 280 g/m<sup>2</sup>.

#### TAMANHOS

S - M - L - XL - 2XL - 3XL

#### PACK



132 160 126 266 262 268



**new**  
2022

### 1180 **LEVI**



Calça com punho nos tornozelos. Cintura elástica ajustável mediante cordões exteriores. Dois bolsos laterais.

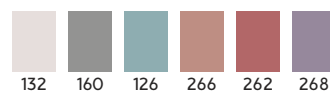
#### TECIDO

60% algodão / 40% poliéster, pelúcia não cardada, 280 g/m<sup>2</sup>.

#### TAMANHOS

XS - S - M - L - XL - 2XL - 3XL

#### PACK



132 160 126 266 262 268







**new**  
2022

## 1181 IRIA



Calça com punho nos tornozelos. Cintura elástica ajustável mediante cordões exteriores. Dois bolsos laterais.

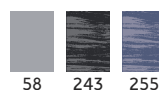
### TECIDO

50% modal / 43% poliéster / 7% elastano, 260 g/m<sup>2</sup>.

### TAMANHOS

XS - S - M - L - XL - 2XL - 3XL

### PACK



## 1119 MANASLU



Sweat unissexo com capuz em tecido leve. Bolsos laterais. Punhos e cintura traseira no mesmo tecido do corpo da sweat.

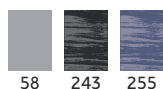
### TECIDO

50% modal / 43% poliéster / 7% elastano, 260 g/m<sup>2</sup>.

### TAMANHOS

XS - S - M - L - XL - 2XL - 3XL

### PACK



**new**  
2022